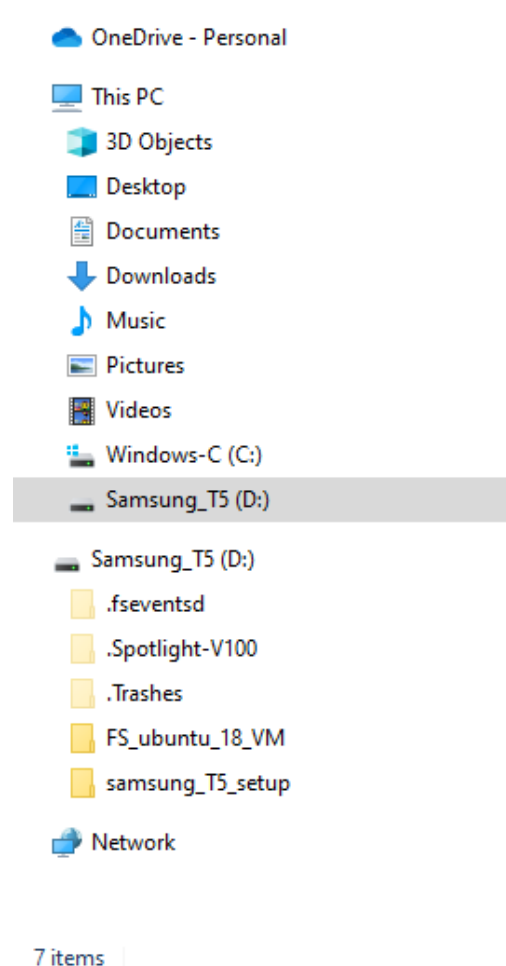
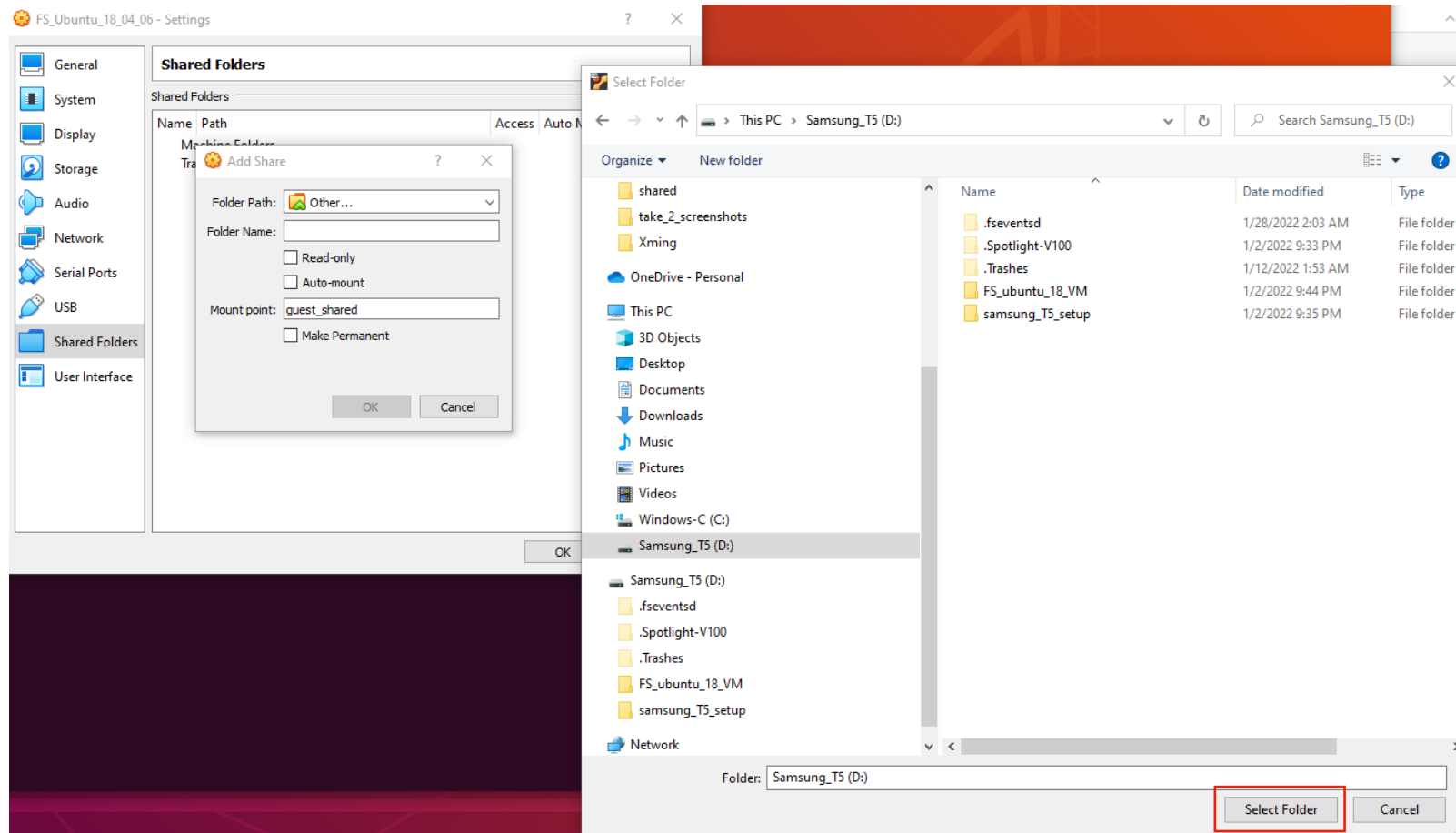


Your external drive must be formatted so the Windows file system can read it. Otherwise it will not show up in Windows Explorer when you plug it into the machine. Some external drives are formatted out of the box in “exFAT” format which can be read by Windows OS, Mac OS, and linux. (Linux systems may need some additional packages installed for this to work).

In the example below an external SSD pre-formatted in exFAT format by the manufacturer is plugged into the Windows machine and shows up as drive “D:”. The Windows OS automatically assigned the unused drive letter “D” to the external drive.

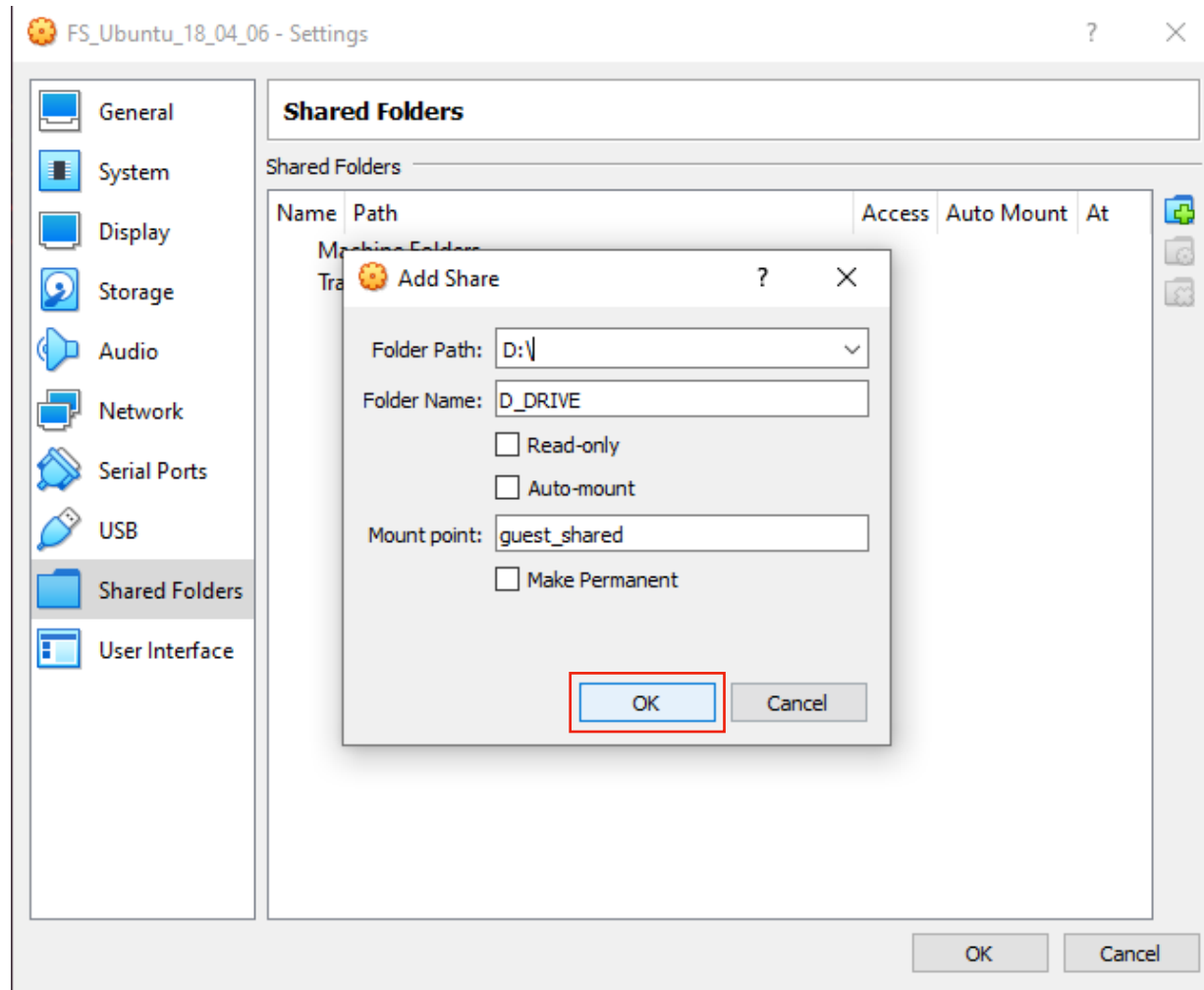


With the VM running, select the pull down menu from the “Devices” tab in the VirtualBox application. Then select “shared folders”. Click the add folder icon (folder with a plus sign) to bring up a pop-up menu where you can in turn navigate to your external drive just as it was displayed above in Windows Explorer. Select the external drive by clicking on “Select Folder”.

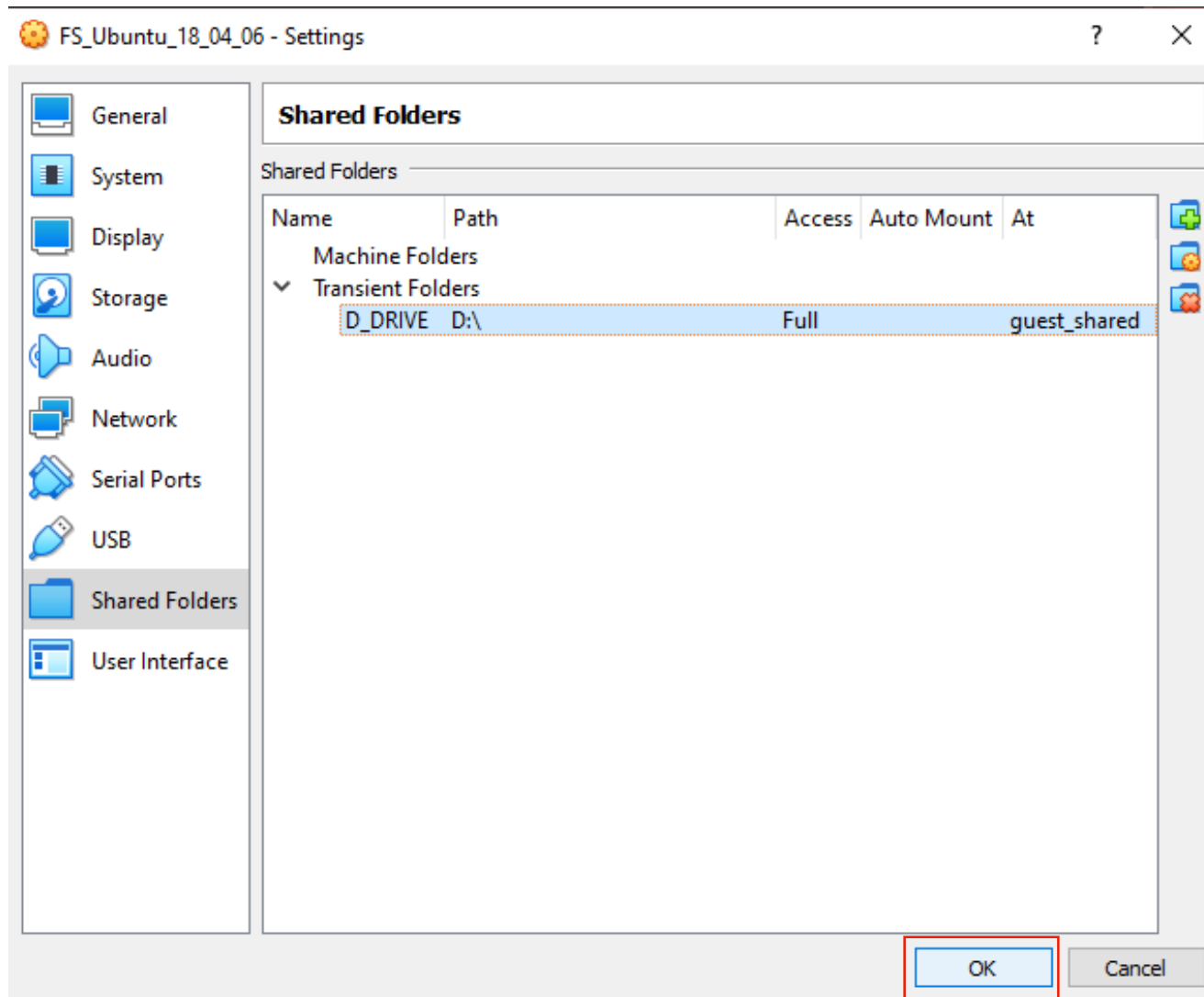


VirtualBox should fill in the entry for the “Folder Path” and “Folder Name” to map to the new drive letter “D”.

You need to provide a path for the mount point in the VM. Here a pre-existing and empty subdirectory in the VM named “guest\_shared” is used (which defaults to the path \$HOME/guest\_shared in Ubuntu). But whatever path you create or choose, it needs to end with an empty subdirectory for the VM mount point. Click OK to exit the “Add Share” pop-up menu when done.

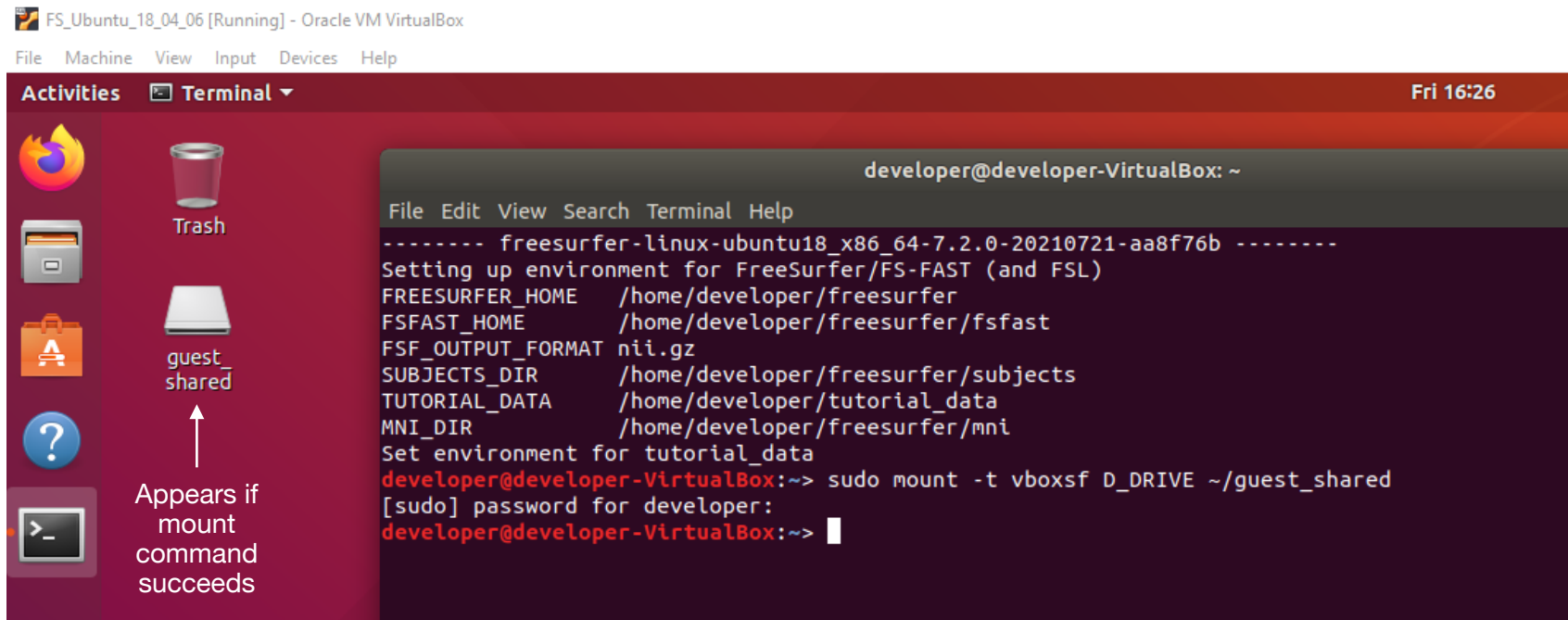


Check the external drive to be shared is now listed along with its mount point in the VM in the VirtualBox “Shared Folders” menu.  
Click OK to exit this menu.



In the Ubuntu VM terminal window, issue the command to mount the entire external drive D:\ from the Windows file system in the Ubuntu file system under the mount point `$HOME/guest_shared`.

If the mount command succeeds, and icon for the “guest\_shared” mount point should appear on the Ubuntu desktop. You can navigate to the files there in the terminal window or by double clicking on the desktop icon.



This page intentionally left blank.